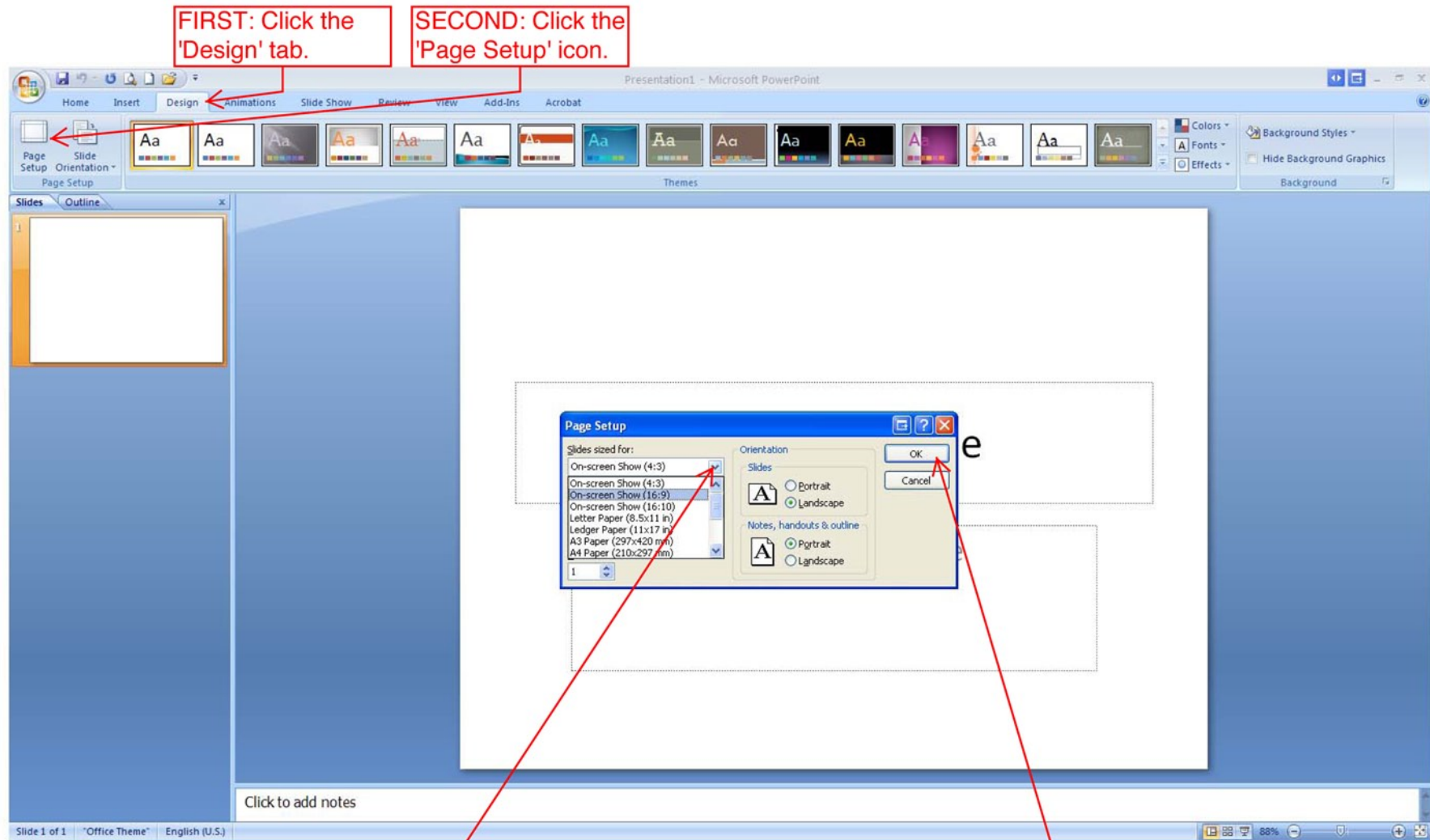


HOW TO SELECT A 16:9 ASPECT RATIO IN POWERPOINT 2007 AND LATER VERSIONS

* THIS MUST BE DONE BEFORE BUILDING YOUR PRESENTATION

GO 16:9

1920 X 1080 PIXELS



FIRST: Click the 'Design' tab.

SECOND: Click the 'Page Setup' icon.

THIRD: Using the drop down menu, select the desired aspect ratio. In this case it is 16:9.

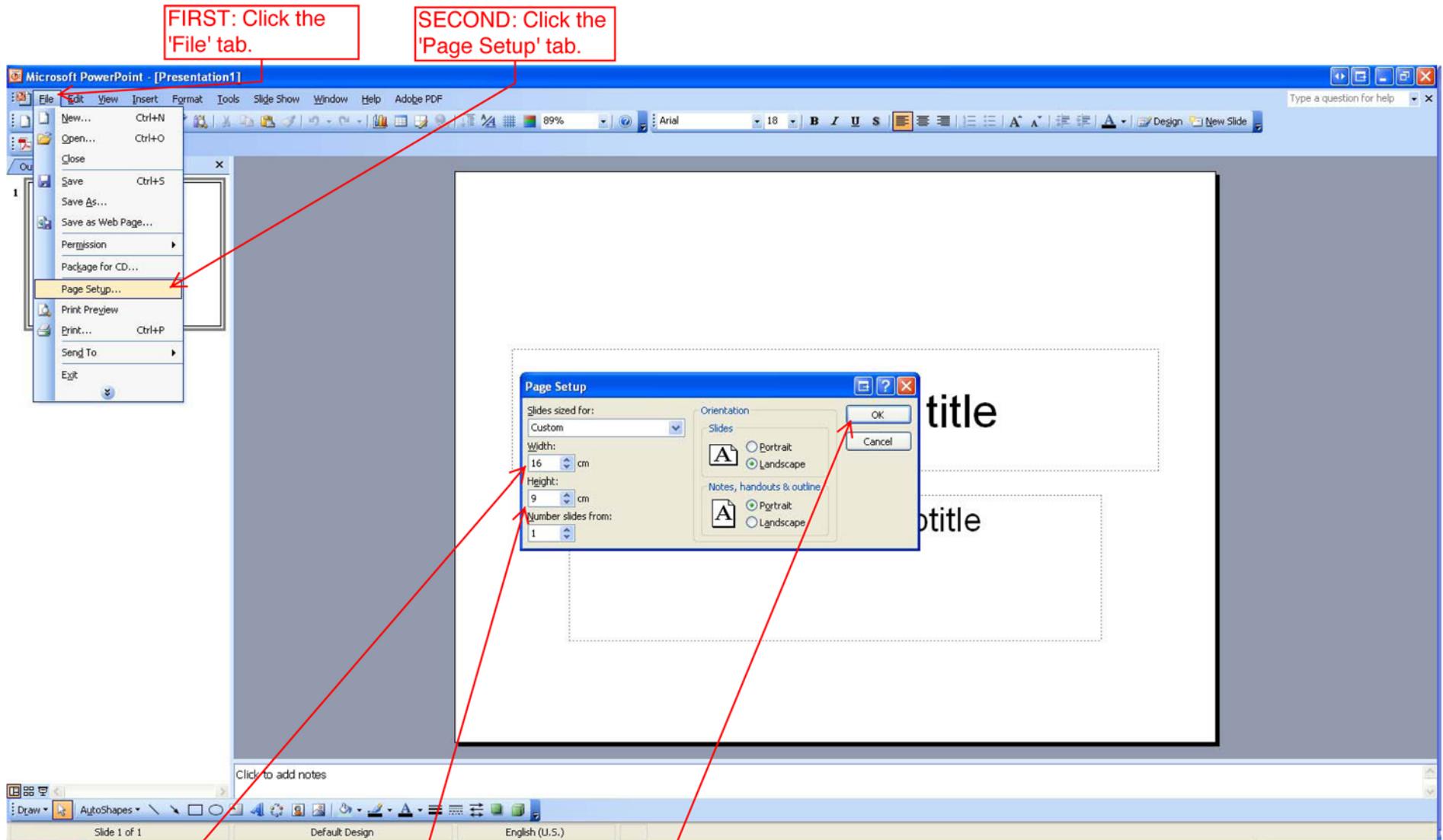
FOURTH: Click 'OK' to apply.

HOW TO SELECT A 16:9 ASPECT RATIO IN POWERPOINT 2003 AND EARLIER VERSIONS

* THIS MUST BE DONE BEFORE BUILDING YOUR PRESENTATION

GO 16:9

1920 X 1080 PIXELS



FIRST: Click the 'File' tab.

SECOND: Click the 'Page Setup' tab.

THIRD: Enter '16' in the Width box

FOURTH: Enter '9' in the Height box

FIFTH: Click 'OK' to apply.