

Transformational Change

Implementing the
National Disability Insurance Scheme
(NDIS) in Western Australia

LEARNING OBJECTIVES

- Share the challenge of being part of national system reform without compromising the positive features of an existing system
- Gain an appreciation of the challenges associated with implementing a national entitlement based support scheme



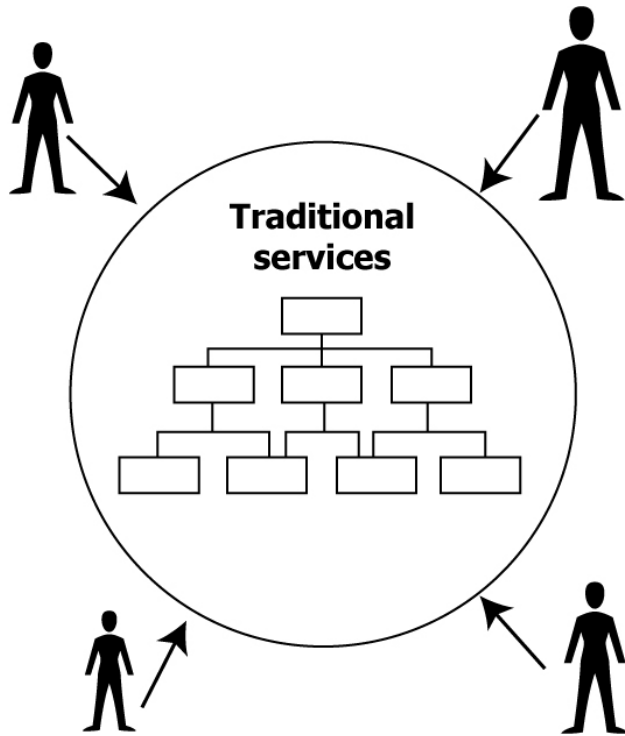
GOVERNMENT OF
WESTERN AUSTRALIA



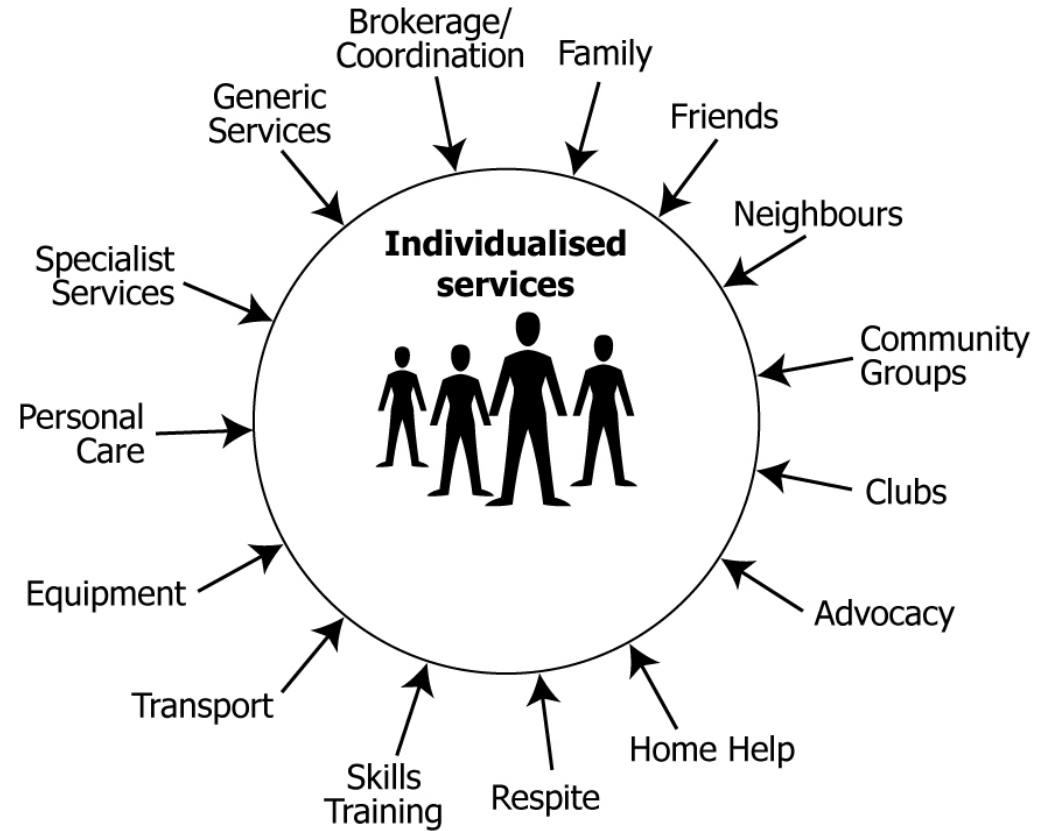
Disability
Services
Commission



The vision - circa 1990



**Supply driven:
Person has to fit the service**



**Demand driven:
Service has to fit the person**

During the 1990's we saw the start of major system reform.

- Local Area Coordination
- Individualised funding
- Self-management
- Individualised accommodation
- Innovative, community based supports
- Informal supports

By 2010 the support system in Western Australia had developed and matured:

- Strong relationship-based support system
- Local decision making
- Remote area strategies (suits WA context)
- Partnership between Government and non-government services
- Sustained growth in government funding (6-7% per annum)

National Investment (projections)

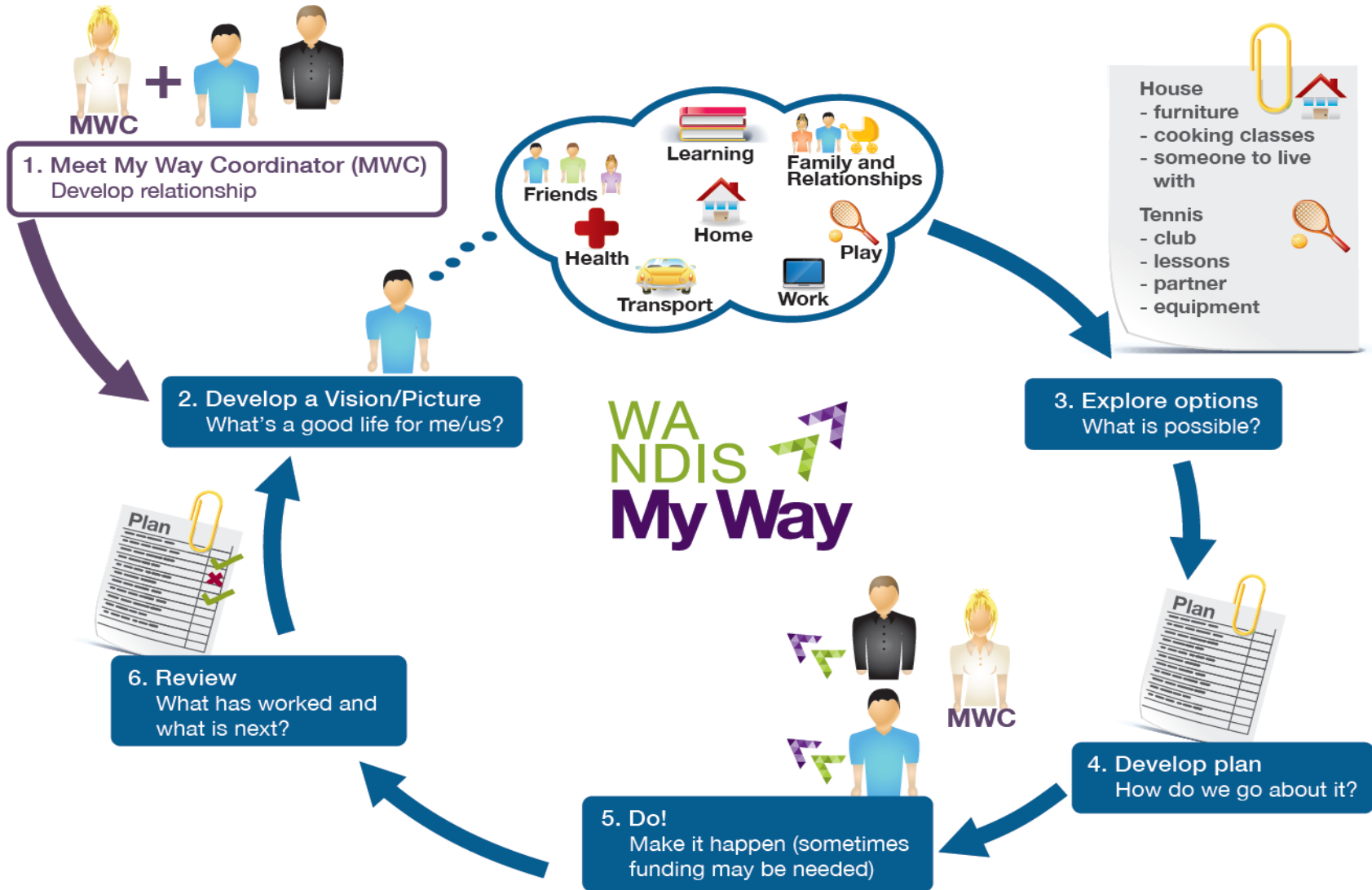
- \$22+ billion per annum
- 450,000 eligible people
- Western Australia: \$2 billion (50:50 Commonwealth and State)
- Political investment
- High community expectations

NDIS – key features

- National consistency in eligibility
- Portability across the nation
- Certainty of support over a person's lifetime
- Reasonable and necessary supports
- Choice and control by the individual/family
- Individualised planning
- Early intervention
- Long term projection of cost of support based on actuarial analysis

Implementing the NDIS in Western Australia

- Relationships and minimal bureaucracy
- Local decision making
- Integral role for Local Area Coordinators
- Strong focus on informal networks and community based supports
- Genuine choice and control
- Sector development planning and development
- Flexible pricing
- Payments in advance to service providers





GOVERNMENT OF
WESTERN AUSTRALIA



Disability
Services
Commission

NDIS My Way



Outcomes (so far) from NDIS My Way trials

- 2,000 people now in the trial
- Average plan costs \$30,000
- 93% of plan outcomes are being achieved
- 20% of people opting for self-management
- 10% of plans require no funding
- Very high level of consumer satisfaction
- No complaints or appeals
- Financial sustainability based on actuarial analysis