

The 7th National Biennial Conference on Adolescents and Adults with Fetal Alcohol Spectrum Disorder

Research on Adolescents and Adults: If Not Now, When?



Thursday, April 7

8:00 – 8:30 am	Registration Open & Exhibits	Foyer
8:30 – 10:00 am	Welcoming Remarks <i>Jan Lutke</i> Remarks: If Not Now, When: Something I Want to Say <i>Destiny</i> Keynote: Have We Failed Children with FASD, and the Adults They Become? <i>Honourable Mary Ellen Turpel-Lafond</i> Remarks: If Not Now, When: Something I Want to Say <i>CJ Lutke</i>	Regency Ballroom
10:00 – 10:30 am	Break: Exhibits & Posters	Foyer & Balmoral
10:30 am – 12:30 pm	Plenary: A Developmental Programming Perspective on Health and Disease Risk <i>Deborah M Sloboda</i> Plenary: Developmental Origins of Health and Disease: A New Perspective on FASD <i>Joanne Weinberg</i> Plenary Panel: The Undiscovered Country: Why and How to Carry out FASD Research Across the Life Span <i>Claire D Coles, Therese Grant, Edward Riley, Kathryn A Kelly</i>	Regency Ballroom
12:30 – 1:30 pm	Lunch (provided), Poster Session & Exhibits <i>Parent Meet and Greet Lunch (Regency B)</i> <i>Lunch for Adults with FASD (Prince of Wales)</i>	Foyer & Balmoral
1:30 – 3:00 pm	Plenary Panel: The Lay of the Land: Results of a Health Survey of Adults with FASD <i>Myles Himmelreich, CJ Lutke, Emily Travis</i> Plenary Panel: Response to Lay of the Land Survey: Where Do We Go From Here? <i>Edward Riley, Joanne Weinberg, Christine Look, Deborah M Sloboda</i>	Regency Ballroom
3:00 – 3:30 pm	Break: Exhibits & Posters	Foyer & Balmoral

Sponsored by:



**Interprofessional
Continuing
Education**

In collaboration with:



Thursday, April 7 continued

3:30 – 5:00 pm

Concurrent Session A

A1 – Oral Session 1

Regency EF

A1a **Effect of Depression on Risk and Protective Factors...**
Annika C Montag

A1b **Identifying Children and Adolescents with FASD in the...**
Jacquelyn Bertrand, Sharon Newburg-Rinn

A1c **Fetal Alcohol Syndrome in Adulthood – A Thirty Year...**
Jenny Rangmar

A2 **What We Know Now – Factors Impacting Daily Functioning in Adults...**
Mary Culshaw, Trina Kennedy

Regency C

A3 **Substance Misuse Treatment Services: Can they Meet the Needs of...**
Julaine Allan

Plaza AB

A4 **(Cancelled)The Empower Project (TEP): Utilizing a Social Enterprise...**
Liz Wolf, Jeffrey Hatcher, Susan Van Dreser

Plaza C

A5 **Nogemag-All my Relations – A Model of Hope and Healing for...**
Lori Vitale Cox

Regency B

A6 **Preliminary Findings from the Yukon FASD Prevalence Study:**
Kaitlyn McLachlan, Loree Stewart

Georgia B

A7 **Navigating Diagnosis and Systems: Understanding the Lived...**
Allison Pooley, Michelle Stewart, Paul Gordon

Regency D

Friday, April 8

7:15 am

Parent Breakfast

Grouse

8:00 – 8:30 am

Registration Open & Exhibits

Foyer

8:30 – 9:40 am

Remarks: If Not Now, When: Something I Want to Say...
Justin

Regency
Ballroom

**Plenary: Prenatal Alcohol Exposure: The Role of
Chemosensory Fetal Programming in Adolescent...**
Steven L.Youngentob

9:40 – 9:55 am

Presentation of the CanFASD Dr. Sterling Clarren FASD Research Award

9:55 – 10:30 am

Break: Exhibits & Posters

Foyer &
Balmoral

10:30 – 12:00 noon

**Plenary: Adult Research: Economics, Policy and
Responsibility - Why Now?**
Facilitator: Paul D. Connor

Svetlana Popova, Moira Plant, Jan Lutke, Michael Charness

Regency
Ballroom

12:00 noon – 1:10 pm

Lunch (on your own) & Exhibits

Friday, April 8 continued

1:10 – 2:40 pm

Concurrent Session B

B1 – Oral Session 2

- B1a** **Second Trimester Ultrasound as a Tool in Early...**
Annika C Montag
- B1b** **Investigating the Sex-Specific Effects of Alcohol in the...**
Mojgan Rastegar
- B1c** **Metabolic Assessment and Obesity Risk in a Novel Mouse**
Robyn M. Amos-Kroohs
- B1d** **The DSM-5 Criteria for ND-PAE and the Canadian Guidelines...**
Nicole Netelenbos

Regency EF

B2/C2 **Assessing Parents with Fetal Alcohol Spectrum Disorder for the...**
Ann Marie Dewhurst, Peter Choate, Michael I Jeffery, Jonathan Nicholson, Terri Davies
Session only for professionals working with families

Georgia B

B3/C3 **Beyond Strategies: Accepting and Adjusting to the Evolving Reality**
Brenda Knight

Regency D

B4 **Moment to Moment: Teens Growing Up with FASD**
Ira J Chasnoff

Regency B

B5 **Supporting Adolescents and Adults with FASD: The Impact on Caregivers**
Carmen Rasmussen, Jacqueline Pei

Plaza AB

B6 **Neurodevelopmental Disorder Associated with Prenatal Alcohol...**
Susan D. Rich

Regency C

2:40 – 3:10 pm

Break – Exhibits & Posters

Foyer

3:10 – 4:40 pm

Concurrent Session C

C1 – Oral Session 3

- C1a** **Prenatal Alcohol Exposure Produces Disproportionate ...**
Eileen M Moore
- C1b** **Neuropsychological Assessment and FASD in Adolescence...**
Leah N. Enns, Nicole Taylor
- C1c** **Functional and Neuropsychological Abilities in Adults...**
Ada Leung, Sharon Brintnell

Regency EF

B2/C2 **Assessing Parents with Fetal Alcohol Spectrum Disorder**
Ann Marie Dewhurst, Peter Choate, Michael I Jeffery, Jonathan Nicholson, Terri Davies
3 hour workshop continued

Georgia B

B3/C3 **Beyond Strategies: Accepting and Adjusting to the Evolving Reality**
Brenda Knight
3 hour workshop continued

Regency D

C4 **FASD, Legislation and Canada: The Place Where the Future Happens First**
Kathryn A Kelly, Rod Snow, Howard Sapers, Larry Bagnell, Sean Casey

Plaza AB

C5 **Neurocognitive Profile of Young Offenders with Fetal Alcohol...**
Katherine Flannigan, Andrew Burke

Regency C

C6 **Alterations in Brain Structure and Function in Children and Adolescents...**
Angelina Paolozza

Regency B

Saturday, April 9

8:00 – 8:30 am	Registration Open & Exhibits	Foyer
8:30 – 9:40 am	Remarks: If Not Now, When: Something I Want to Say <i>Thomas</i> Plenary: FASD as a Foresight Disorder: Implications for Expanded Service Eligibility <i>Stephen Greenspan</i>	Regency Ballroom
9:40 – 10:10 am	Break: Exhibits & Posters	Foyer & Balmoral
10:10 – 11:40 am	Concurrent Session D	
D1 – Oral Session 4		
D1a	Patterns of Disordered Eating in Individuals with FASD <i>Susan M. Smith</i>	Regency EF
D1b	Characterizing Auditory Processing in Adolescents and... <i>Susan A McLaughlin, John C Thorne</i>	
D1c	Alcohol Intervention for Adolescents with FASD: Project... <i>Mary J. O'Connor</i>	
D2/ E2	Impact of FASD on Success in Meeting the Challenges of Early Adulthood <i>Mary E Lynch, Molly N Millians, Claire D. Coles</i>	Regency D
D3	FASD and Homelessness - An Advocacy Focused Research Project <i>Dorothy Badry, Christine Walsh</i>	Plaza AB
D4	Virtual Environments as a Method of Intervention for Individuals with... <i>Rianne E. Spaans, Heather Gautreau</i>	Plaza C
D5i	'Melding' Pot <i>Erin J Reimer-Mayzes</i>	Georgia A
D5ii	The Blair Charters Project Create Something Positive <i>Blair Charters, Jacy L Morissette</i>	Georgia A
D6	Screening Older Adolescents and Adults for a Possible FASD and... <i>Dan Dubovsky</i>	Regency B
D7	An Employment Training Program (Trades Focus) for Young Adults... <i>Ellen Chambers, Mark Price</i>	Georgia B
11:40 am – 12:40 pm	Lunch (provided) & Exhibits	Foyer & Balmoral
12:40 – 2:10 pm	Concurrent Session E	
E1	Supportive Housing for Adults with FASD: 15 Years of Experience... <i>Simukai Sam Mutiwekuziwa, Judy Pakozdy, Richard Sam</i>	Regency E/F
D2/E2	Impact of FASD on Success in Meeting the Challenges of Early Adulthood <i>Mary E Lynch, Molly N Millians, Claire D. Coles</i> <i>3 hour workshop continued</i>	Regency D
E3	Developments in Prevention of FASD - The Work of the CanFASD... <i>Nancy Poole, Dorothy Badry</i>	Regency B

Saturday April 9 continued

- | | | |
|-----------|--|-----------|
| E4 | Junior Leadership Program for Youth with FASD
<i>Nicole Schween, Michelle Ennis, Flora Ennis</i> | Plaza AB |
| E5 | Using Current FASD Research for Effective Legal Advocacy
<i>Karen A Steele</i> | Georgia B |
| E6 | Creating Effective Communication Skills with Individuals with FASD
<i>Brenda Knight</i> | Regency C |
| E7 | The Welfare System for Adults with Disabilities in Germany and...
<i>Gela Becker</i> | Plaza C |

2:40 – 3:30 pm **Closing Keynote: It's Time: Head, Heart and Hands**
Rebecca Martell Regency Ballroom

3:30 - 4:00 pm **Presentation of Starfish Awards**
Closing Ceremonies: One Voice
& Closing Remarks

4:00pm **Adjourn**

Poster Listing

Poster presenters will be at their posters to answer questions on Thursday, April 7 at 1:00-1:30pm.

Support Services Case Study from Bremen, Germany (faspektiven e.V.)

Britta Andreas

Hope and Heart: A Photovoice Portrait of a Young Adult with FASD

Meridith C Burles

Social Communication Profiles of Youth with Fetal Alcohol Spectrum Disorder (FASD)

Jamie Hack, Lucy Ruthven

Fetal Alcohol Spectrum Disorder: The Difficulties of Identification and Diagnosis of Adolescents and Adults with FASD in the UK

Laura Harrison, Charlotte Willis

Fetal Alcohol Spectrum Disorder (FASD) Initiative: Outcomes, Tools, Resources & Next Steps - National Strategic Projects

Holly MacKay

Adolescents with FASD and Psychiatric Co-morbidities in BC: Clinical, Case Management, and Policy Perspectives

Erika Ono

Balmoral

Planning Committee

Jan Lutke, Conference Chair, Vancouver, BC

Tina Antrobus, MA, RCC, Registered Clinical Counselor, PLEA Community Services, Coquitlam, BC

Anne Fuller, RN, MSN, Provincial FASD Consultant, Children and Youth with Special Needs Policy, Ministry of Children and Family Development, Government of British Columbia, Victoria, BC

Brenda Knight, Registered Psychologist, Private Practice, Vancouver, BC

Christine Loock, Associate Professor, Department of Paediatrics, University of British Columbia; Social Paediatrics Program, BC Children's Hospital & Sunny Hill Health Centre for Children, Vancouver, BC

Kristina Hiemstra, Director, Interprofessional Continuing Education, University of British Columbia, Vancouver, BC

Marsha Wilson, MA, Leadership, Faculty Member, Douglas College, New Westminster, BC

Michelle Sherbuck, Principal at Write & Design, Parent, Advocate, Public Speaker, Surrey, BC

Kee Warner, Executive Director, Whitecrow Village FASD Society, Nanaimo, BC

Expert Planning Committee

Ilona Autti-Rämö, MD, Research Professor, Head of Health Research, Research Department, The Social Insurance Institution, Helsinki, Finland and Adjunct Professor at the Child Neurology Department, Helsinki University Hospital, Finland

Michael Charness, MD, Physician, Harvard Medical School, Harvard University, West Roxbury, MA, USA

Edward Riley, PhD, Director, Center for Behavioral Teratology, Distinguished Professor, Department of Psychology, San Diego State University, San Diego, CA, USA

Joanne Weinberg, PhD, Professor and Distinguished University Scholar, Emerita, Department of Cellular & Physiological Sciences, University of British Columbia, Vancouver, BC

Advisory Committee

Sally M. Anderson, Ph.D., ICCFASD Coordinator and Executive Secretary; Office of the Director, National Institute on Alcohol Abuse and Alcoholism, National Institutes of Health, Bethesda, MD, USA

Dorothy Badry, PhD, RSW, Assistant Professor, Faculty of Social Work, University of Calgary, Calgary, AB

Tatiana Balachova, PhD, Associate Professor, Co-Director, Interdisciplinary Training Program in Child Abuse and Neglect (ITP), Department of Paediatrics, The University of Oklahoma Health Sciences Center, Oklahoma City, Oklahoma, USA

Diane Black, PhD, FAS Foundation of the Netherlands, Uithuizen, the Netherlands; and Chair, European FASD Alliance

Peter W. Choate, PhD, Assistant Professor, Social Work, Mount Royal University, Calgary, AB

Paul D. Connor, PhD, Neuropsychologist, Private Practice and Courtesy Clinical Assistant Professor, Fetal Alcohol and Drug Unit, University of Washington, Seattle, WA, USA

Lori Vitale Cox, PhD, Clinical Coordinator, Eastern Door Diagnostic Team for FASD and Related Conditions; Director, Nogemag Healing Lodge for Youth, Rexton, NB

Dan Dubovsky, MSW, FASD Specialist, SAMHSA FASD Center for Excellence, Rockville, MD, USA

Elizabeth Elliott, MD, MPhil, FRACP, FRCPCH, FRCP, Paediatrics & Child Health, Sydney University and The Children's Hospital Westmead, Sydney, Australia

James P. Fitzpatrick, FRACP, MBBS, BSc, Paediatrician, Telethon Kids Institute, Patches Paediatrics, Subiaco, Australia

Denis Lamblin, MD, Developmental Paediatrician, SAF FRANCE President, REUNISAF Founder, Medical director of the CAMSP (Fondation du Père FAVRON) Reunion Island, Saint Louis, France

Christine Loock, MD, FRCP(C), Associate Professor, Department of Paediatrics, University of British Columbia, BC Children's Hospital & Sunny Hill Health Centre for Children, Vancouver, BC

Rebecca Martell, Clinical Associate, Occupational Performance Analysis Unit (OPAU), Department of Occupational Therapy, University of Alberta, Edmonton, AB

Philip A May, PhD, Research Professor, University of North Carolina at Chapel Hill-Nutrition Research Institute, Kannapolis, NC, USA Raja A.S. Mukherjee, Consultant Psychiatrist, Honorary Senior Lecturer, Surrey and Borders, Partnership NHS Foundation NHS Trust; St George's University of London, UK FASD Specialist, London, UK

Kieran D O'Malley, MB BAO BCH DABPN, Child and Adolescent Psychiatrist, Charlemont Clinic, Dublin, Ireland

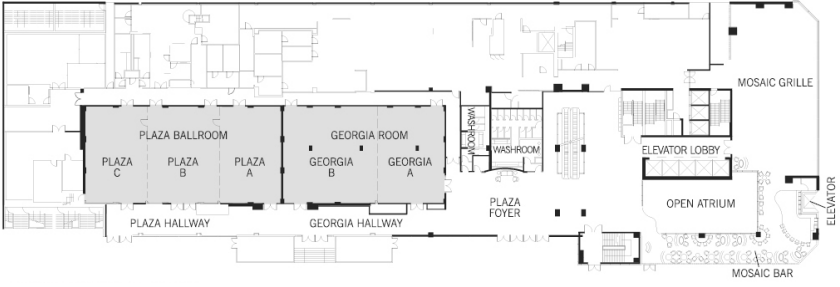
Moir Plant, PhD, Professor of Alcohol Studies Alcohol & Health Research Unit, University of the West of England, Bristol, UK

Christine Rogan, BA, Health Promotion Advisor, Alcohol Healthwatch Trust and National Coordinator, Fetal Alcohol Network New Zealand

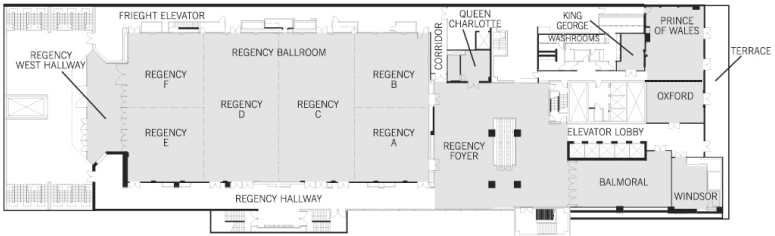
Paula Stanghetta, Trainer, Facilitator, Paula Stanghetta & Associates, Kitchener, ON

Kenneth R Warren, PhD, Deputy Director, National Institute on Alcohol Abuse and Alcoholism, National Institutes of Health, Bethesda, MD, USA

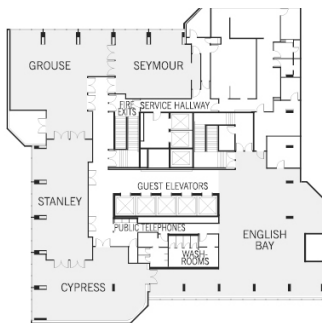
Plaza Level (Second Floor)



Convention Level (Third Floor)



Perspectives Level (Thirty-Fourth Floor)



Acknowledgements

We would like to acknowledge with great appreciation the support from Public Health Agency of Canada and financial support from the following organizations:

Platinum Sponsor and In Collaboration With:



Gold Sponsors:



Bronze Sponsors:



UNIVERSITY OF CALGARY
FACULTY OF SOCIAL WORK

Exhibitors

- | | |
|---|--|
| The Asante Centre | Snug Vest |
| Bow Valley College | Westminster House Recovery Centre for Women |
| Canada FASD Research Network | Uganda Serenity Centre |
| Community Living of British Columbia | UBC Department of Pediatrics and Child & Family Research Institute |
| Douglas College | |
| FASD Communities | |
| Fetal Alcohol Syndrome Society of Yukon (FASSY) | Resource Table: |
| Institute of Health Economics | Saskatchewan Prevention Institute |
| NTI Upstream | Family Support Institute |
| ODIN Books | NeuroDevNet/Strongest Families Research Study |