

# Shaping Health Equity Practice:

## Preliminary Scoping Review of Key Perinatal Documents in BC (2002-2017)

Shahram, S., Black, M. [Presenter], Marcellus, L., Pauly, B., MacDonald, M.

# Overview

- Research Question
- Background
  - Health Equity
  - Health Equity vs. Health Equality
  - Equity Lens in Public Health Research Project
  - Why Perinatal Health Public Health Services
  - Contextual Influences
- Methods
  - Focus of Scoping Review
  - Data Collection
  - Sample
  - Data Analysis
- Results
  - BC's Guiding Framework
  - Thoughts About Preliminary Trends
- Next Steps
- Questions for Discussion

# Shaping Health Equity Practice: Preliminary Scoping Review of Key Perinatal Documents in British Columbia (2002-2017)

**Research question:** What is the policy context influencing the application of a health equity lens in relation to mental health promotion, prevention of mental disorders and harms of substance use within perinatal programs in BC?

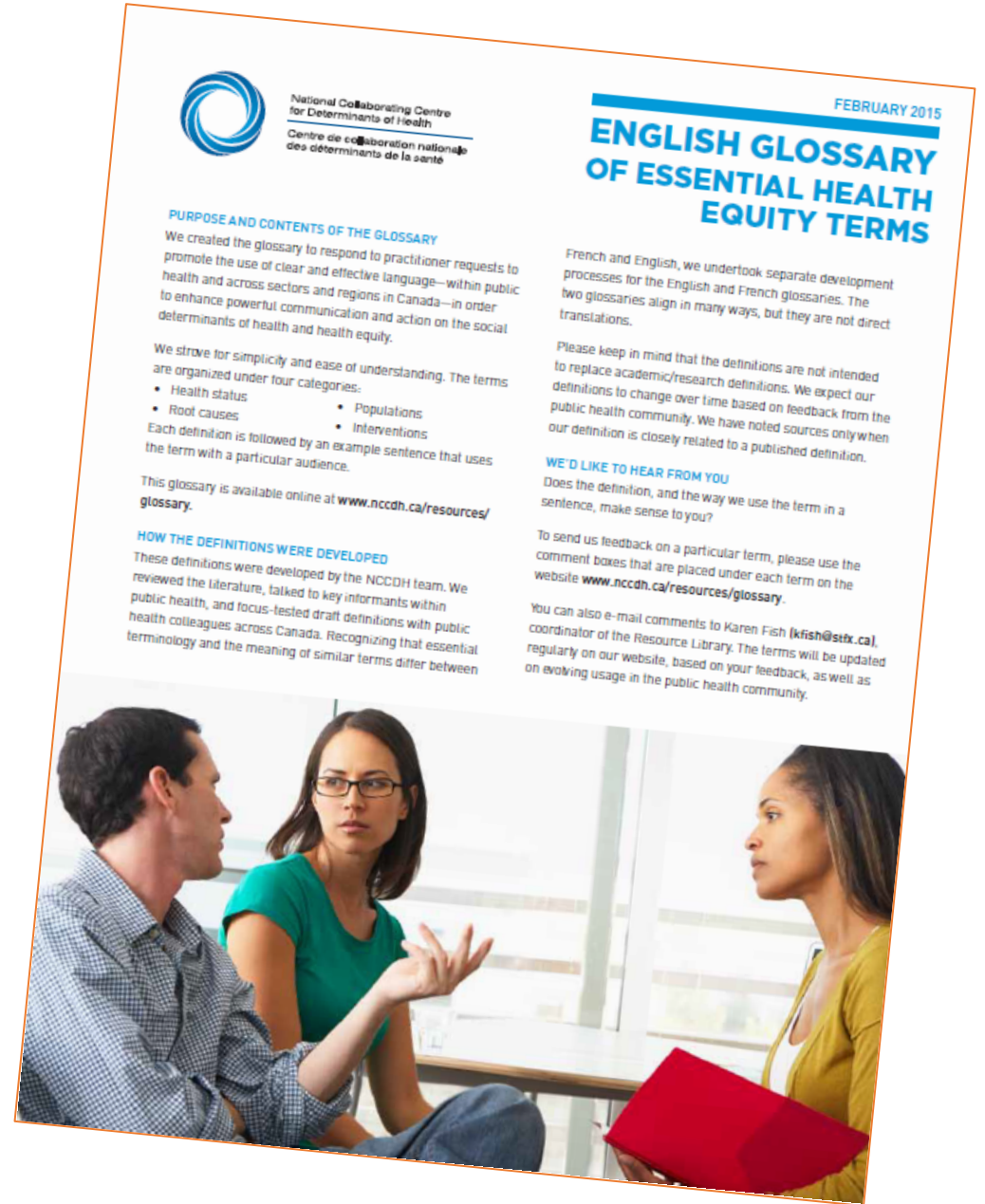


# Health Equity

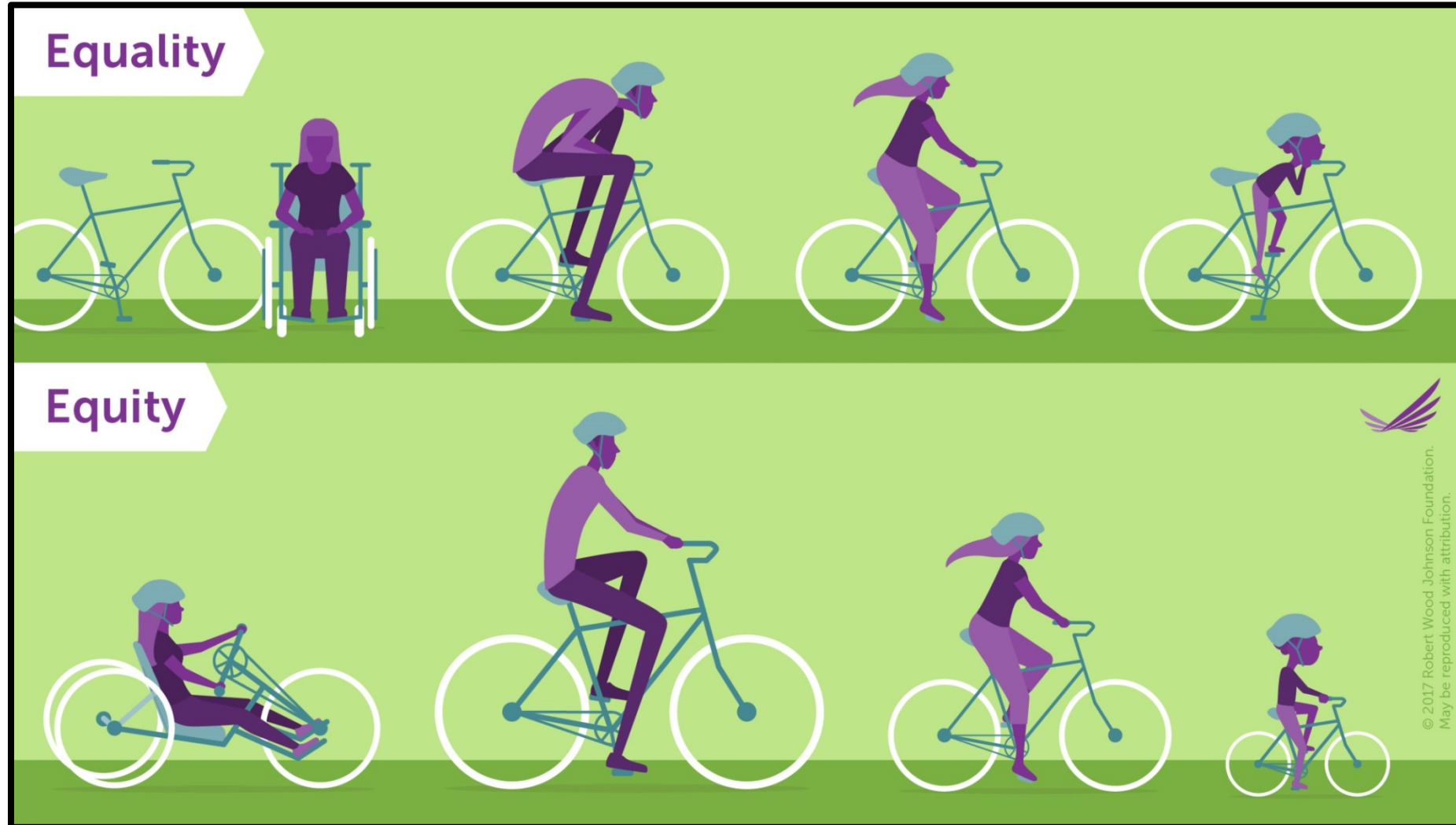
Health equity means all people (individuals, groups and communities) have a fair chance to reach their full health potential and are not disadvantaged by social, economic and environmental conditions.

NCCDH Glossary of Essential Health Equity  
Terms

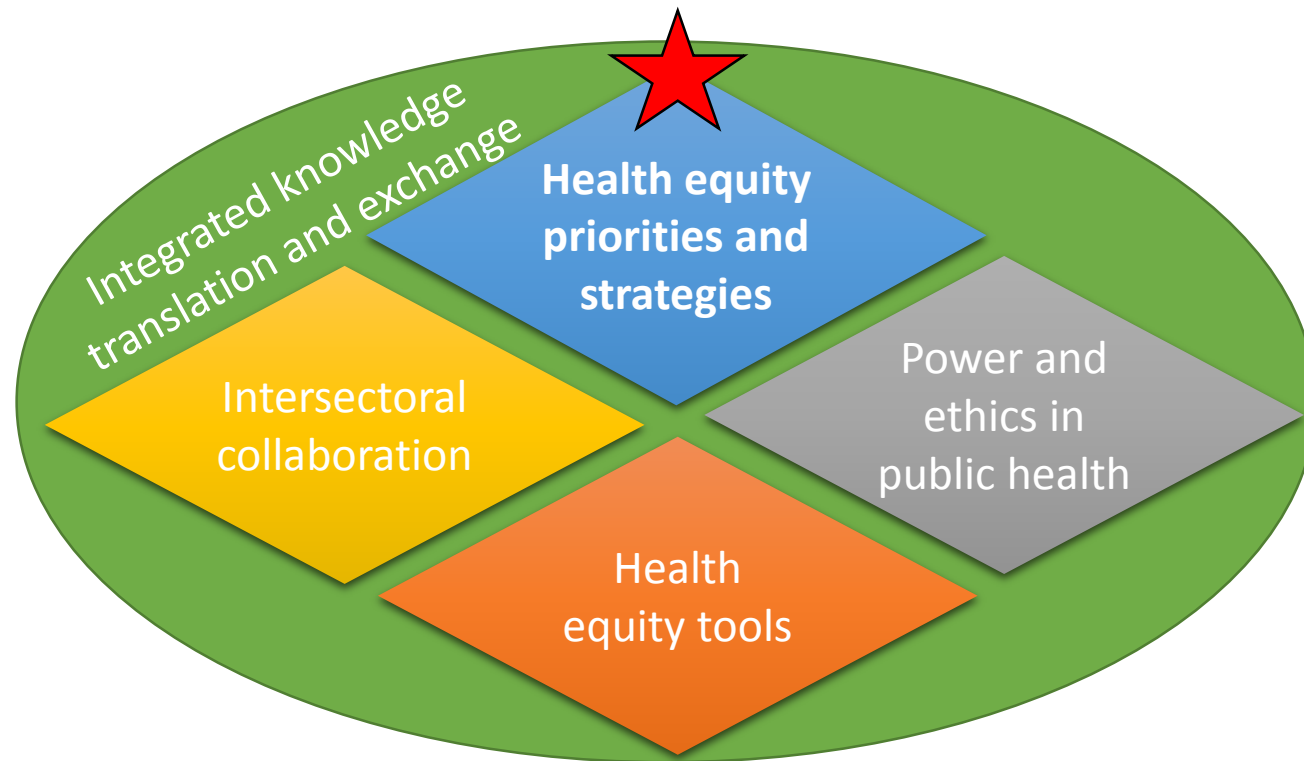
<http://nccdh.ca/resources/glossary/>



# Health Equity vs. Health Equality



# Equity Lens in Public Health (ELPH) Research Project



 **ELPH Study 1: Health equity priorities and strategies**



# Why perinatal public health services?

1. Many perinatal initiatives/programs are inherently related to health equity

2. PH traditionally targets many of their programs at perinatal population



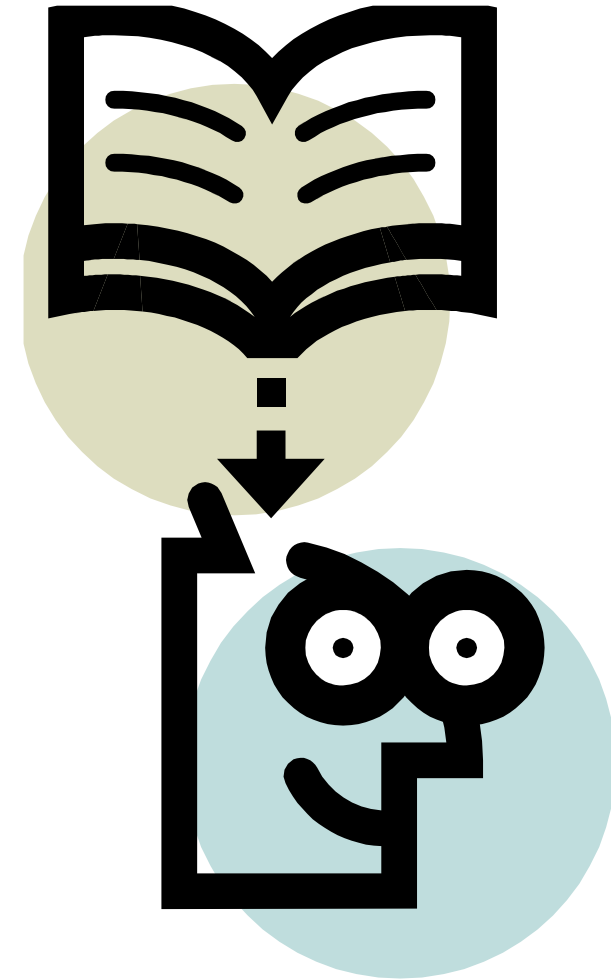
## Perinatal Analysis

3. Leading issues in perinatal services are PPD, IPV & Substance Use

Data with perinatal public health front line staff organically formed an analysis group for understanding the application of health equity in perinatal services

# Contextual Influences

- **Documents**
  - “...are important to the work of governments and organizations as essential tools that guide thinking and action...”
  - “...progression or movement of knowledge into action and research into policy is channeled through a document...”





# Focus of Our Scoping Review

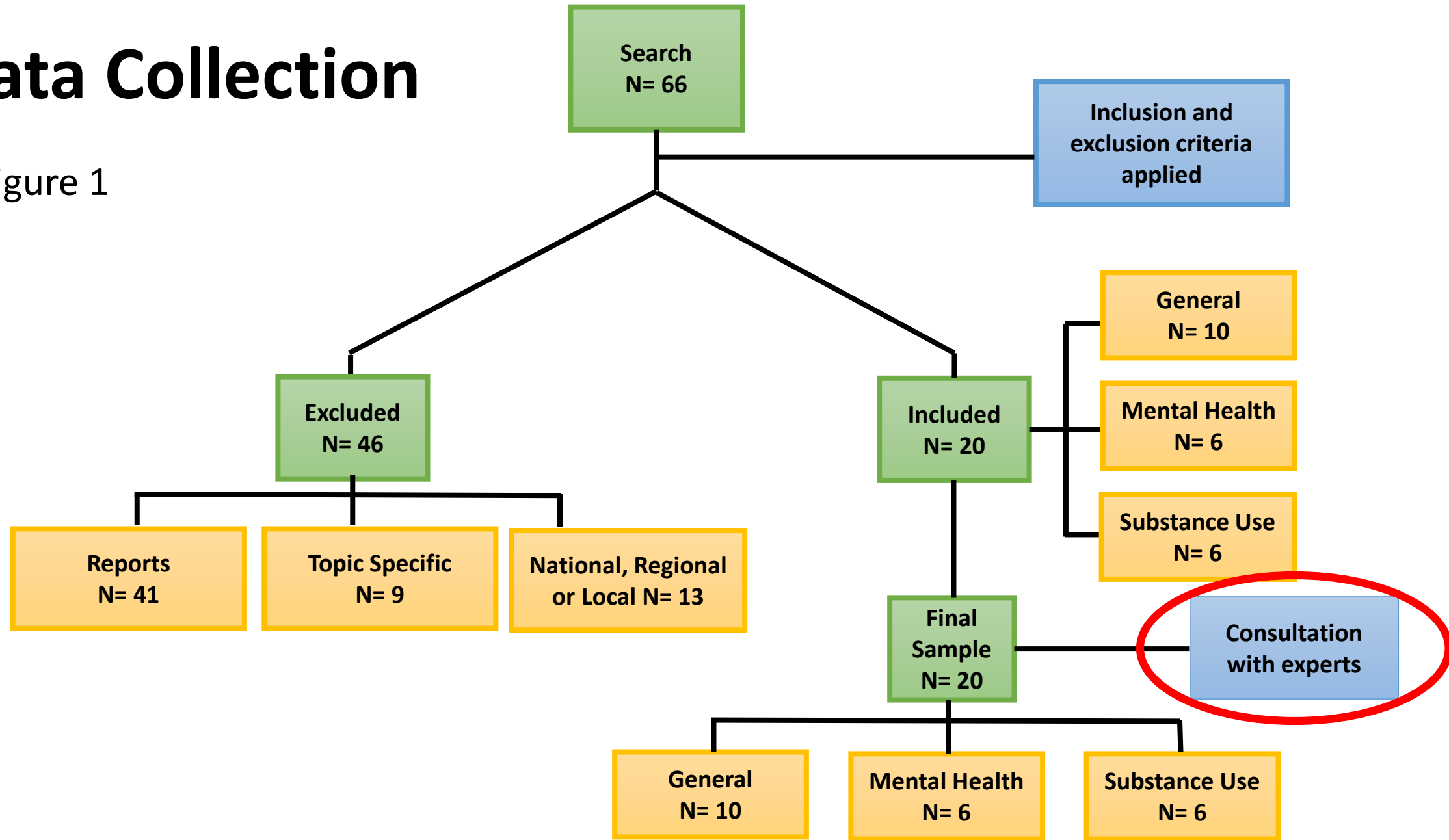


Provincial level policy documents in BC that are either:

- a foundational document that guides perinatal service delivery generally OR,
- guides perinatal service delivery in relation to mental health promotion, prevention of mental disorders and harms of substance use as its primary focus;
- AND publically available;
- AND published between 2002 and 2017.

# Data Collection

Figure 1



# Sample

## Legend

- ◆ General
- Mental Health and Substance Use

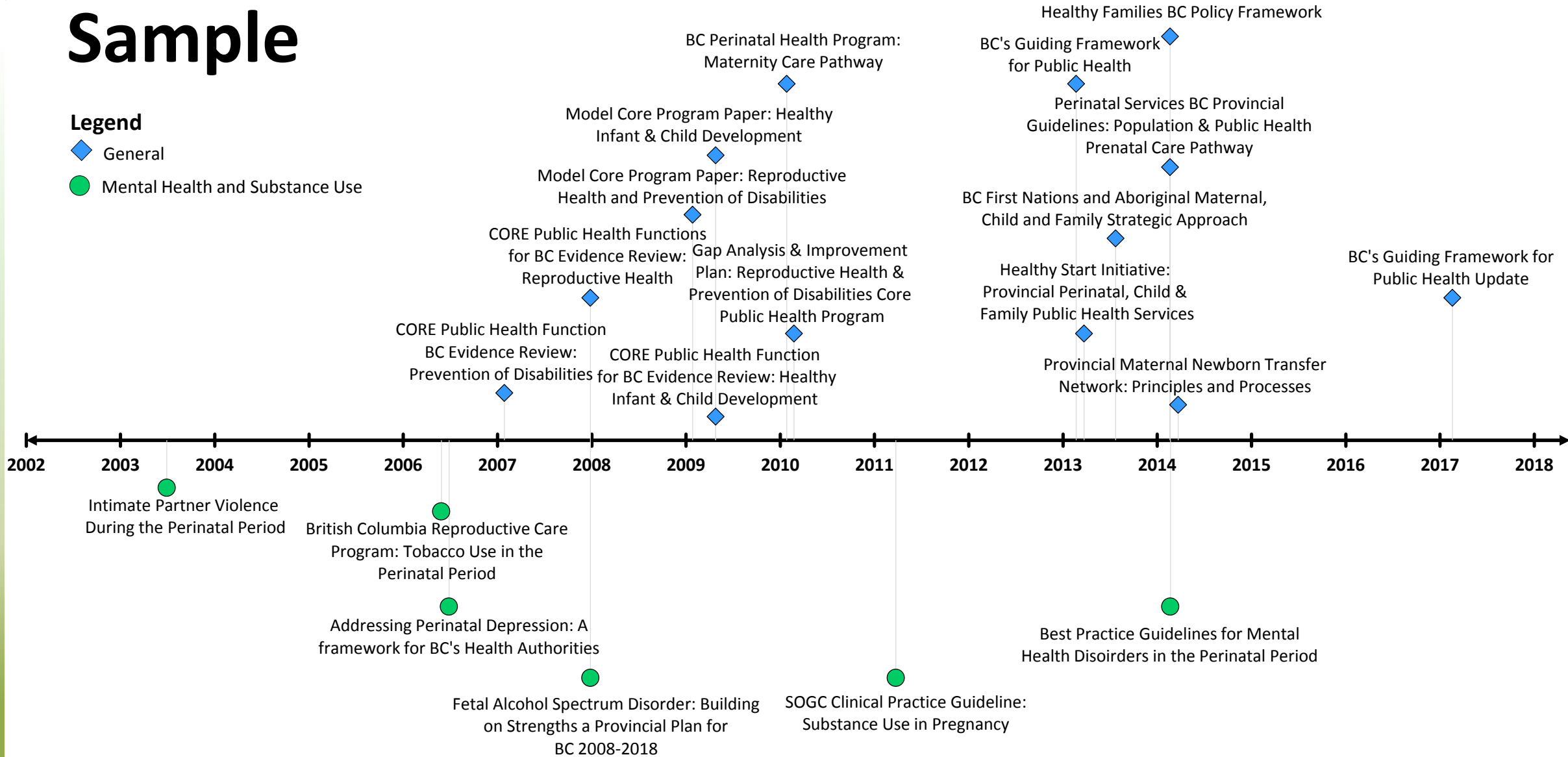
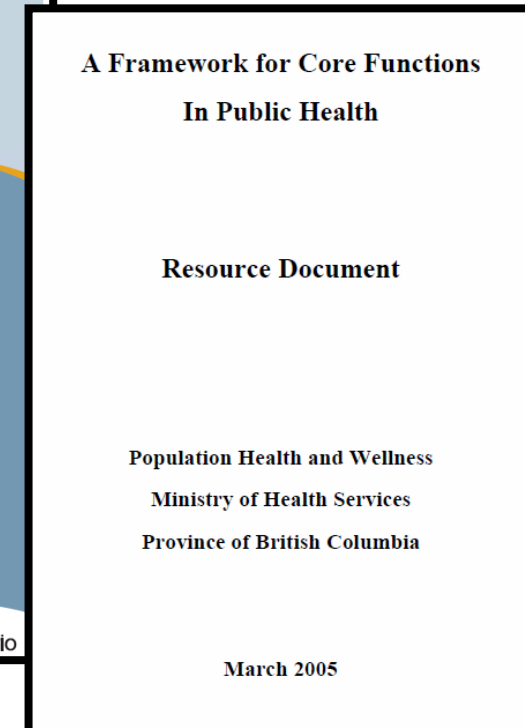
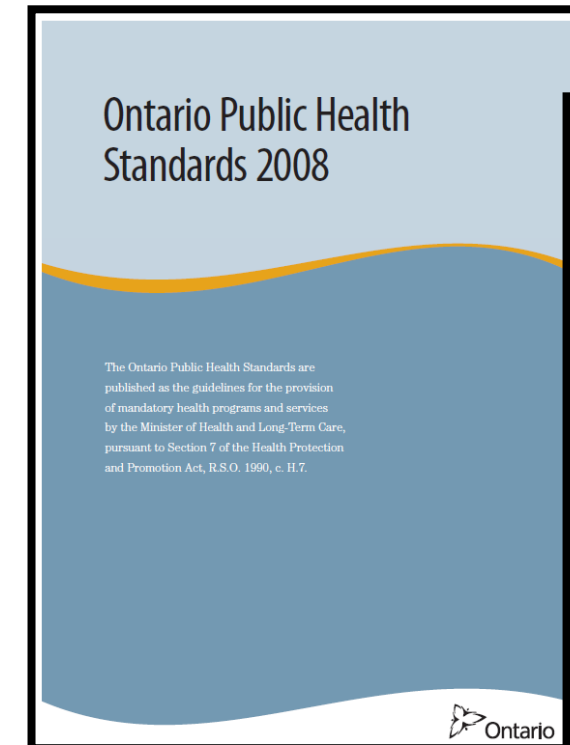


Figure 2

# Data Analysis

- Framework for our analysis was guided by Pinto et al.
  - Research question:
    - How is equity conceptualized and integrated into key public health documents in Ontario and BC?
  - Documents included:
    - Ontario Public Health Standards 2008
    - British Columbia Framework for Core Functions in Public Health 2008
  - Analysis:
    - Methodology was based on constant comparative analysis drawn from grounded theory.
    - Sets of questions were developed to guide the analysis.



# Data Analysis



## Why use the framework from Pinto et al?

RESEARCH

Open Access

### Equity in public health standards: a qualitative document analysis of policies from two Canadian provinces

Andrew D Pinto<sup>1,2</sup>, Heather Manson<sup>3\*</sup>, Bernadette Pauly<sup>4,5</sup>, Joanne Thanos<sup>6</sup>, Amanda Parks<sup>7</sup> and Amy Cox<sup>4</sup>

**Table 1 Questions developed iteratively to analyse key documents**

<b>Preliminary questions</b>	<ol style="list-style-type: none"> <li>1. Are the following terms mentioned in the documents? Where are they mentioned?               <ol style="list-style-type: none"> <li>a. equity, equities</li> <li>b. inequity, inequities</li> </ol> </li> <li>2. Are equity/equities or inequity/inequities explicitly defined in the documents?</li> <li>3. In what context is equity/equities or inequity/inequities mentioned?</li> <li>4. Is improving equity or reducing inequity an explicit goal?</li> </ol>
<b>Secondary questions</b>	<ol style="list-style-type: none"> <li>1. What proxy terms are used to relate to equity?</li> <li>2. Is the definition of equity in the ON and BC documents related to social justice?</li> <li>3. Is addressing health inequities in the ON and BC documents equated with addressing structural conditions that produce inequities?</li> <li>4. Is there reference to the SDOH in the ON and BC documents, and if so, what are the expectations of PH (explicitly or implicitly) in addressing them?</li> <li>5. Are there specific examples of certain populations to focus on? E.g. low-income, Aboriginal, etc</li> <li>6. To what extent is accountability to address inequities mentioned or considered in the docs?</li> <li>7. Are there specific actions recommended or expected from PH in addressing health inequities?</li> </ol>
<b>Tertiary questions</b>	<ol style="list-style-type: none"> <li>1. How does equity intersect with accessibility?</li> <li>2. Are there unexpected or unusual ideas about equity that appear?</li> <li>3. Are there programs or standards where equity seems to have been missed?</li> </ol>

# Data Analysis - Our Process



We tested the application of the framework from Pinto et al on 4 documents by:

1. Initial read through
2. Second read through with application and consideration of *preliminary questions*

1. Are the following terms mentioned in the documents? Equity, equities?	2. Are the following terms mentioned in the documents? Inequity, inequities?	3. Are equity/equities or inequity/ inequities explicitly defined in the documents?	4. In what context is equity/equities/ inequity/ inequities mentioned?	5. Is improving equity or reducing inequity an explicit goal?
---	---	---	--	---

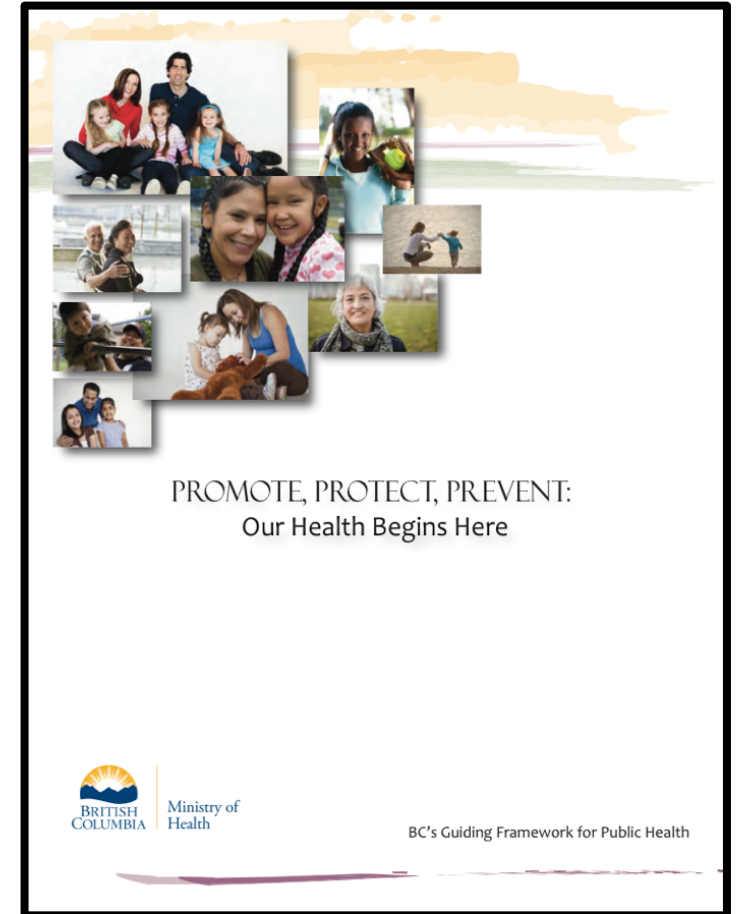
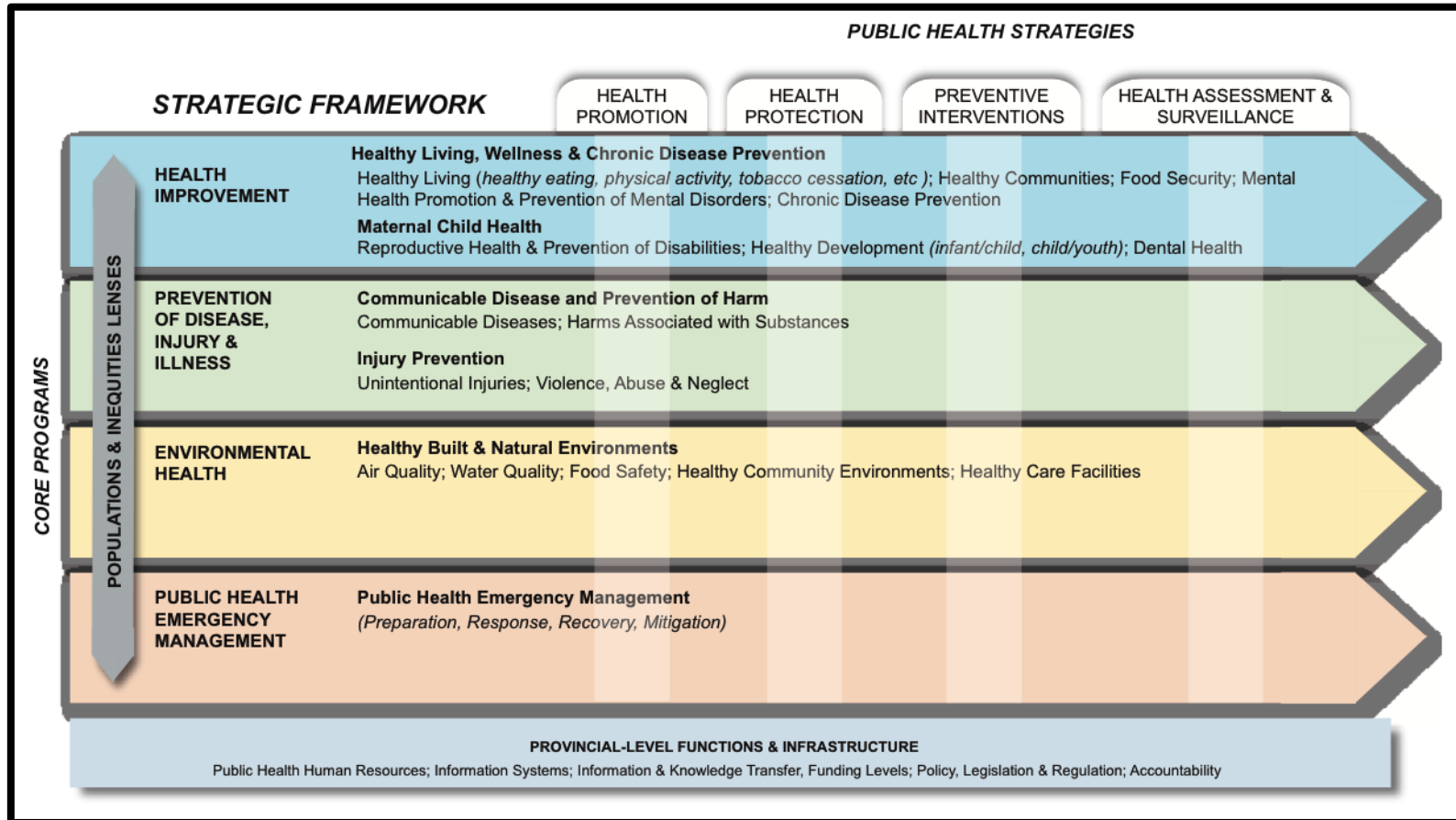
3. Third read through with application and consideration of *secondary questions*

1. What proxy terms are used to relate to equity?	2. Is the definition of equity in the document related to social justice?	3. Is addressing health inequities in the document equated with addressing structural conditions that produce inequities?	4. Is there reference to the SDOH in the document, and if so, what are the expectations of PH (explicitly or implicitly) in addressing them?	5. Are there specific examples of certain populations to focus on? E.g. low-income, Aboriginal, etc.?	6. To what extent is accountability to address inequities mentioned or considered in the docs?	7. Are there specific actions recommended or expected from PH in addressing health inequities?
---	---	---	--	---	--	--

4. Forth read through with application and consideration of *tertiary questions*

1. How does equity intersect with accessibility?	2. Are there unexpected or unusual ideas about equity that appear?	3. Are there programs or standards where equity seems to have been missed?
--	--	--

# BC's Guiding Framework for Public Health, 2017

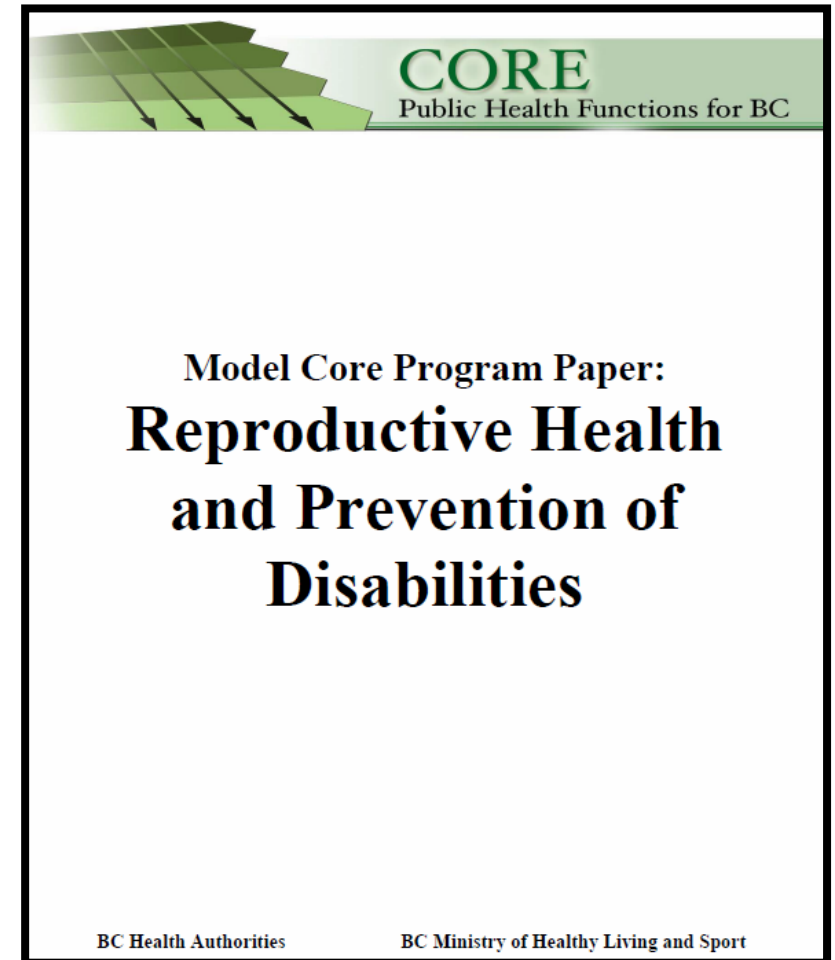




# Thoughts about Preliminary Trends

Provincial level policy document in BC that is foundational and guides perinatal service delivery generally (n=1)

- Equit\* rarely mentioned and improving equity/ reducing inequity not an explicit goal;
- Equity not clearly defined;
- Equity addressed in the context of...
  - Service delivery;
  - Gender equity;
  - Naming vulnerable groups;
  - Conditions that produce vulnerability;
- Equity was missed in some programs (e.g. social media campaigns);
- Actions and a way forward for addressing inequity described, including accountability, however practical guidance missing.



# Thoughts about Preliminary Trends

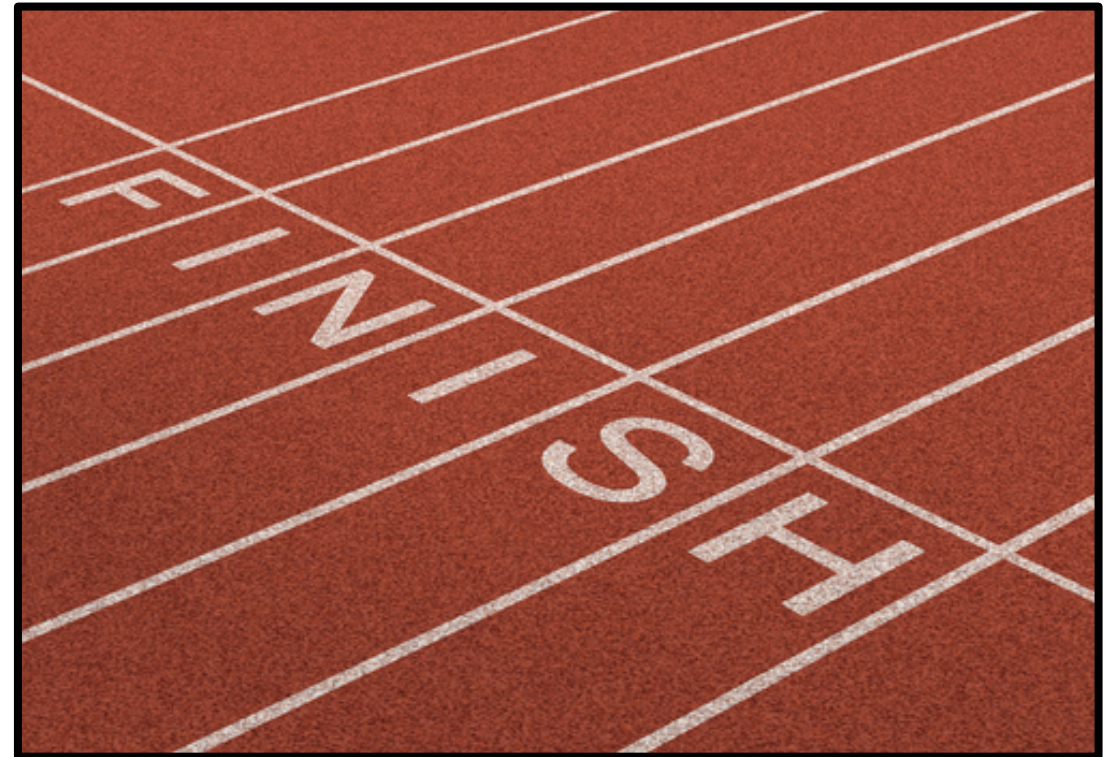
Provincial level policy documents in BC that guides perinatal service delivery in relation to mental health promotion, prevention of mental disorders and harms of substance use as its primary focus (n=3)

- Equit\* not mentioned, and improving equity/ reducing inequity not an explicit goal;
- Equity not explicitly defined;
- Equity discussed in the context of naming vulnerable groups and/ or the conditions that produce vulnerability.



# Next Steps

- Complete expert consultation for finalizing sample
- Finalize sample
- Finalize framework for analysis
- Complete analysis



# Questions for Discussion

1. Thoughts about framework/ questions for document analysis:
  - a. Are the questions we are asking of the data useful?
  - b. Are we missing any important questions to ask the data?
2. Thoughts about sample:
  - a. Have we missed any key perinatal health policy documents?
3. What opportunities do you think exist for prioritizing health equity in perinatal public health practice?





# 1. Thoughts about framework/ questions for document analysis:

- a. Are the questions we are asking of the data useful?
- b. Are we missing any important questions to ask the data?

## Preliminary Questions

1. Are the following terms mentioned in the documents? Equity, equities?	2. Are the following terms mentioned in the documents? Inequity, inequities?	3. Are equity/equities or inequity/ inequities explicitly defined in the documents?	4. In what context is equity/equities/ inequity/ inequities mentioned?	5. Is improving equity or reducing inequity an explicit goal?
--	--	---	--	---

## Secondary Questions

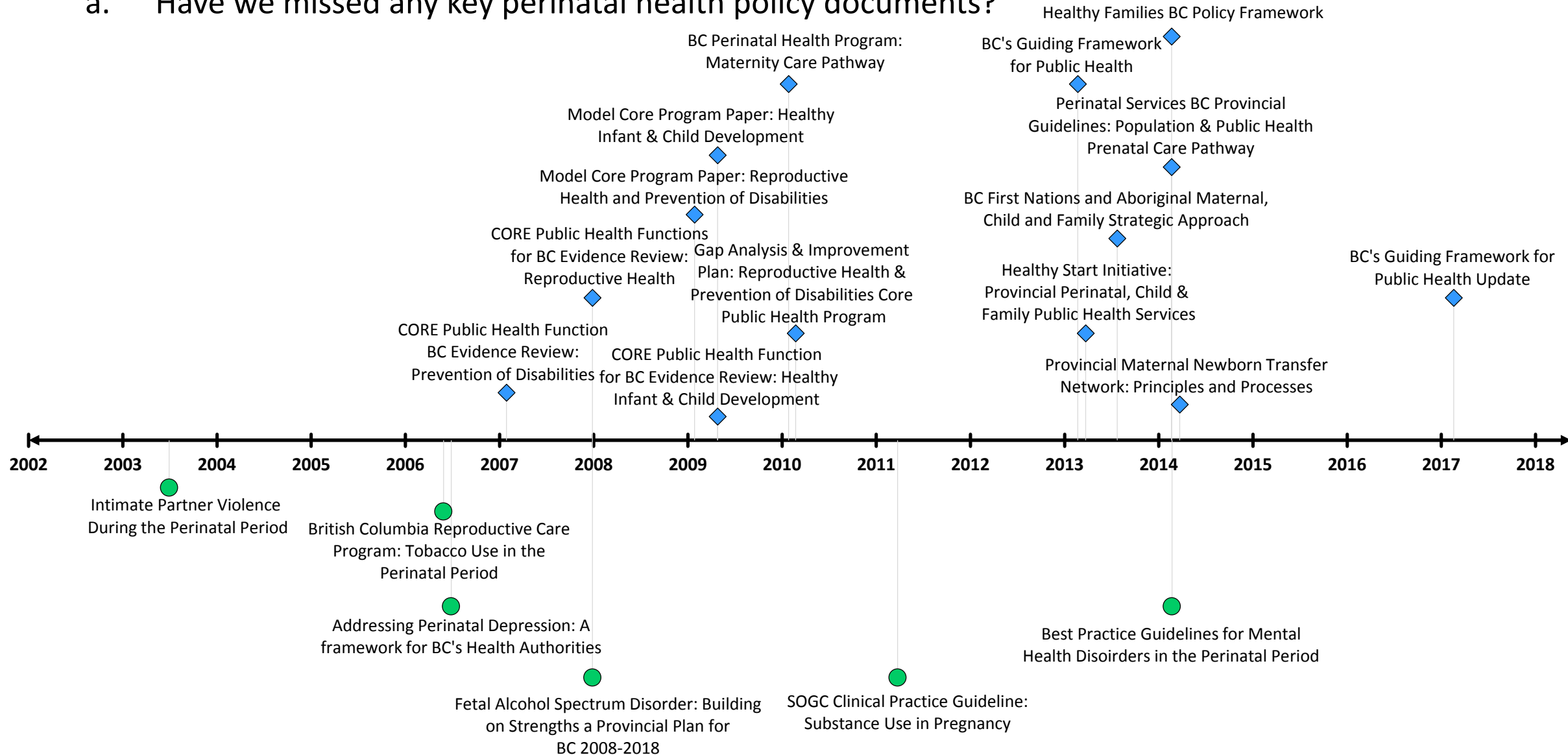
1. What proxy terms are used to relate to equity?	2. Is the definition of equity in the document related to social justice?	3. Is addressing health inequities in the document equated with addressing structural conditions that produce inequities?	4. Is there reference to the SDOH in the document, and if so, what are the expectations of PH (explicitly or implicitly) in addressing them?	5. Are there specific examples of certain populations to focus on? E.g. low-income, Aboriginal, etc.?	6. To what extent is accountability to address inequities mentioned or considered in the docs?	7. Are there specific actions recommended or expected from PH in addressing health inequities?
---	---	---	--	---	--	--

## Tertiary Questions

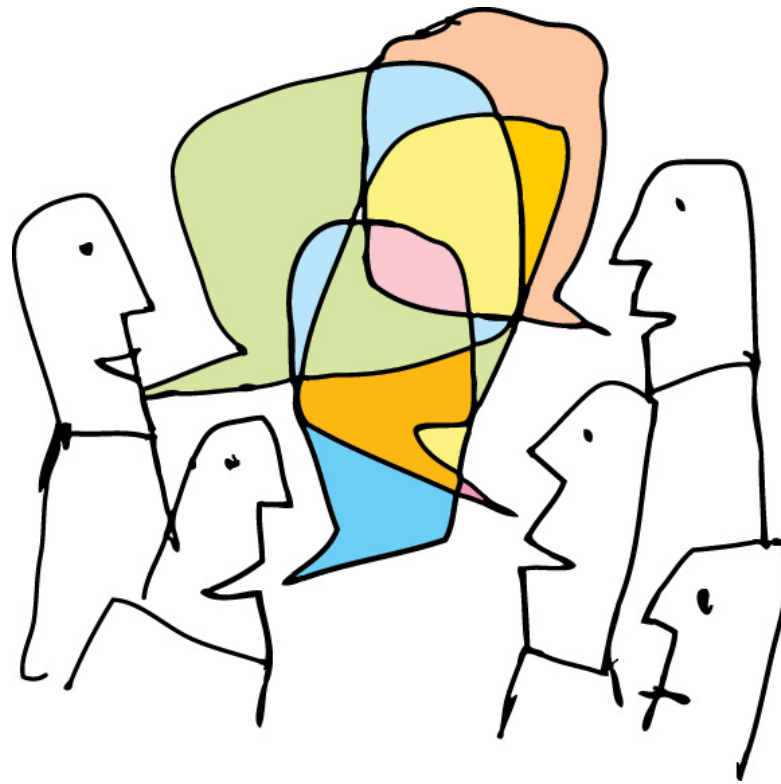
1. How does equity intersect with accessibility?	2. Are there unexpected or unusual ideas about equity that appear?	3. Are there programs or standards where equity seems to have been missed?
--	--	--

## 2. Thoughts about sample:

a. Have we missed any key perinatal health policy documents?

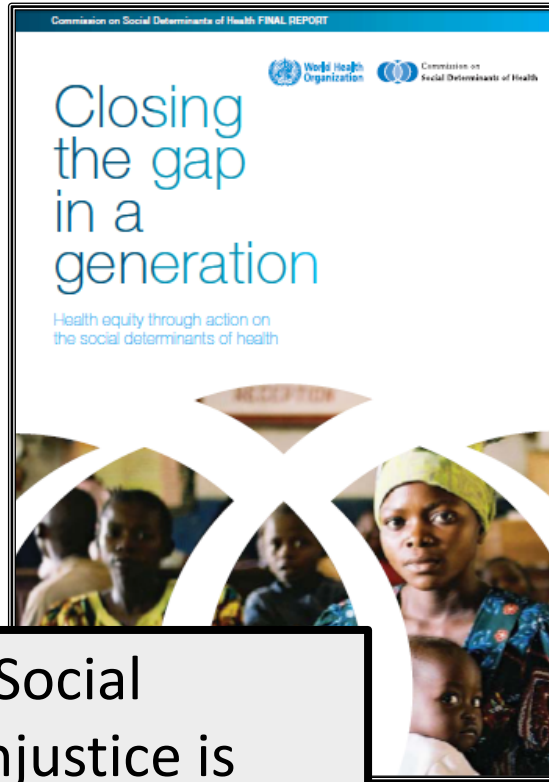


### 3. What opportunities do you think exist for prioritizing health equity in perinatal public health practice?





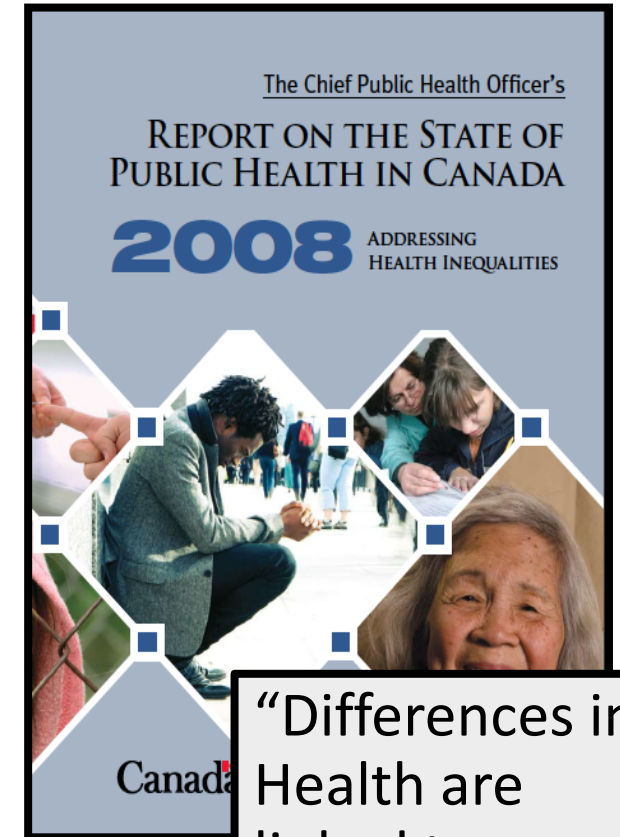
# Promoting Health Equity



“Social injustice is killing people on a grand scale”

“Reorientation of Health System towards HE through Action on SDOH is needed”  
(Rio Declaration, 2011).

- ‘Not for The Faint Hearted’ (Baum, 2010)
- Political endeavor
  - Focus, worth and importance of HE SDOH
- Health systems reflect dominant values
  - e.g. individualism, efficiency



“Differences in Health are linked to degrees of social disadvantage.”



**Megan Black, MPH**

*Public Health Epidemiologist, Aboriginal Health Program*

Interior Health Authority

Kelowna, BC

[megan.black2@interiorhealth.ca](mailto:megan.black2@interiorhealth.ca)